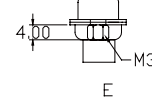
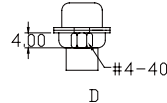
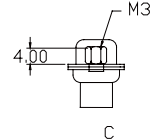
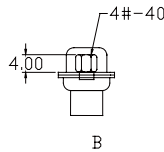
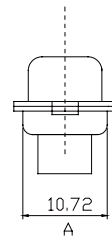
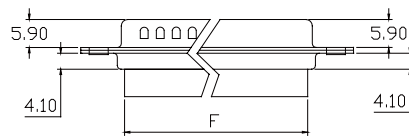
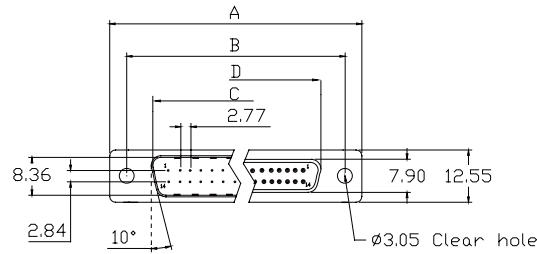


SPECIFICATION

Current Rate: 3 AMP
 Insulation Resistance: 1000mΩ Min
 Contact Resistance: 20mΩ Max
 Dielectric voltage: 1000V AC for one minute
 Operation Temperature: -55°C to +105°C

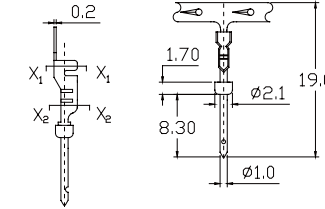
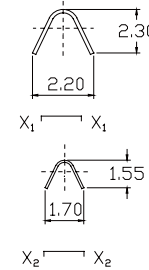
MATERIAL

Insulator: Polyester,UL94v-0
 ©Standard: P.B.T
 Contact Pin F: Phosphor Bronze
 M: Brass
 Shell-Steel zinc plated or tin plated or
 nickel plated Screw-Brass nickel plated

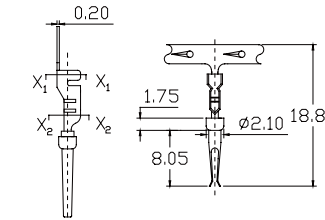
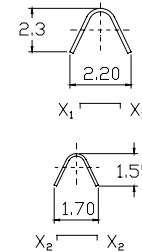


Dimensions

POSITION	A	B	C	D	E	F
9	30.81	24.99	16.92	16.33	11.08	19.20
15	39.14	33.32	25.50	24.66	19.39	27.70
25	53.04	47.04	38.96	38.38	33.24	41.10
37	69.32	63.50	55.42	54.84	49.86	57.30

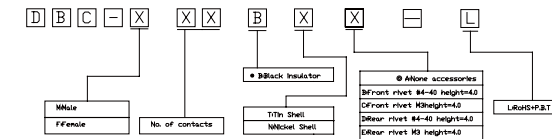


10 Crimp Pin Male Terminal
PART No.DBC-M1-L



10 Crimp Pin Female Terminal
PART No.DBC-FT-L

ORDER INFORMATION



APPRO

CHECK

DRAWN

PART NO. DBC-XXXBXX-L

ITEM NO.

DRAW NO.

UNIT mm SCALE no

TOLER NO.

DESCRIPTION

